

Tests [Edit Test](#)
 Tests
  Groups
  Links



 **(2020) Primary 5 Science (Term 4) - SCGS** /

Add Questions

Assign

Settings

Review

 Duplicate Print Delete Assign Test**Test Introduction**[+ Add Introduction](#)**64 Questions** (62 Points)Question Bank: 9,275 Questions 

Test Questions

0 Test Assignments





Question 1

Primary 5 Science » Primary 5 Science (Term 4)

2 pts

For each question, four options are given. One of them is the correct answer.

Study the classification table below.

Group A	Group B
 bat	 crocodile
 zebra	 parrot

How are the above animals classified?

- A) where they live
- B) the way they move
- C) their number of legs
- D) the way they reproduce



Question Type: Multiple Choice
Randomize Answers: No
Date Added: Thu 26th Aug 2021
Last Modified: N/A
QID#: 28,828,059

[Answers](#) | [Edit](#) | [Duplicate](#) | [Used In](#) | [Reorder](#)

[Remove From Test](#)

Question 2

Primary 5 Science » Primary 5 Science (Term 4)

2 pts

Organism X lives in the school garden and its characteristics are noted as follows:

- needs air
- unable to fly
- able to reproduce
- can make its own food

Which one of the following could Organism X be?

- A) ant
- B) frog
- C) rose plant
- D) mushroom

Question Type: Multiple Choice
Randomize Answers: No
Date Added: Thu 26th Aug 2021
Last Modified: N/A
QID#: 28,828,069

[Answers](#) | [Edit](#) | [Duplicate](#) | [Used In](#) | [Reorder](#)

[Remove From Test](#)

Question 3

Primary 5 Science » Primary 5 Science (Term 4)

2 pts

Which one of the following statements is true about the digestive system?

- A) digestion begins in the stomach
- B) digested food is absorbed in the gullet
- C) water is absorbed in the large intestine
- D) undigested food is absorbed in the small intestine

Question Type: Multiple Choice
Randomize Answers: No
Date Added: Thu 26th Aug 2021
Last Modified: N/A
QID#: 28,828,074

[Answers](#) | [Edit](#) | [Duplicate](#) | [Used In](#) | [Reorder](#)

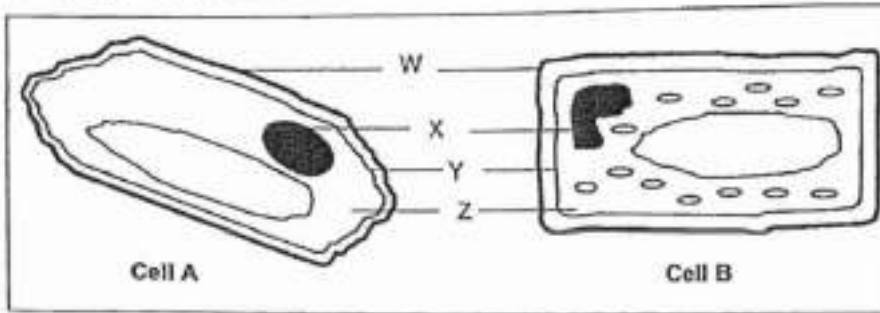
[Remove From Test](#)

Question 4

Primary 5 Science » Primary 5 Science (Term 4)

2 pts

The diagrams below show two different cells, A and B, from the same plant.



Which part of the cell, W, X, Y or Z, controls cellular activities in a cell?

- A) W
- ✓ B) X
- C) Y
- D) Z

Question Type: Multiple Choice
Randomize Answers: No
Date Added: Thu 26th Aug 2021
Last Modified: N/A
QID#: 28,828,079

[Answers](#) | [Edit](#) | [Duplicate](#) | [Used In](#) | [Reorder](#)

[Remove From Test](#)

Question 5

Primary 5 Science » Primary 5 Science (Term 4)

2 pts

The differences between inhaled and exhaled air are shown in the table. Which of the following are correct?

	Inhaled Air	Exhaled Air
A	Is warmer	Is cooler
B	Contains more oxygen	Contains less oxygen
C	Contains less water vapour	Contains more water vapour
D	Contains some nitrogen	Contains some nitrogen

- A) A and D only
- ✓ B) B, C and D only
- C) A, C and D only
- D) A, B, C and D

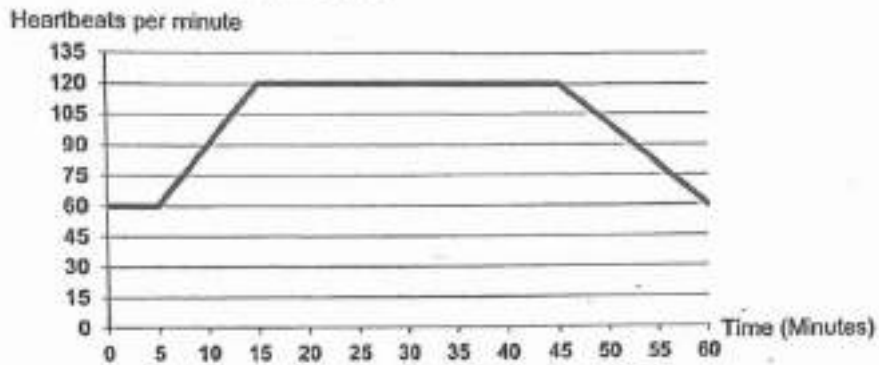
Question Type: Multiple Choice
Randomize Answers: No
Date Added: Thu 26th Aug 2021
Last Modified: N/A
QID#: 28,828,084

[Answers](#) | [Edit](#) | [Duplicate](#) | [Used In](#) | [Reorder](#)[Remove From Test](#)**Question 6**

Primary 5 Science » Primary 5 Science (Term 4)

2 pts

Minghua recorded his heartbeat rate within 1 hour. He plotted a graph with the data he obtained as shown below.



Based on the graph above, how long did Minghua exercise?

- A) 30 minutes
- B) 35 minutes
- ✓ C) 40 minutes
- D) 60 minutes

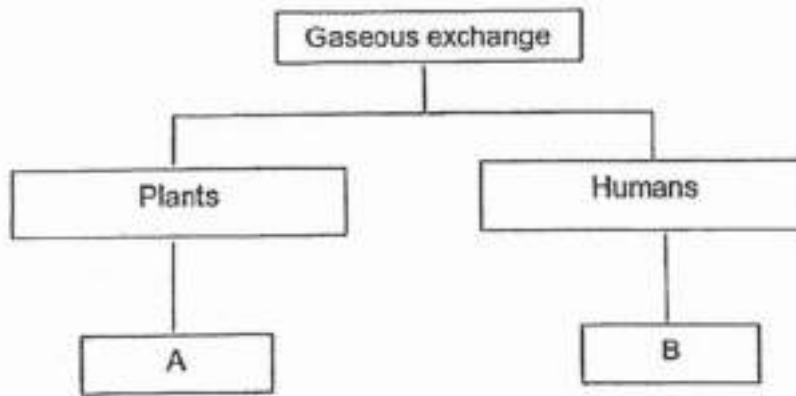
Question Type: Multiple Choice
Randomize Answers: No
Date Added: Thu 26th Aug 2021
Last Modified: N/A
QID#: 28,828,085

[Answers](#) | [Edit](#) | [Duplicate](#) | [Used In](#) | [Reorder](#)[Remove From Test](#)**Question 7**

Primary 5 Science » Primary 5 Science (Term 4)

2 pts

Look at the classification chart below.



Which of the following represent A and B correctly?

	A	B
1)	leaves	gullet
2)	roots	windpipe
3)	stem	nose
4)	stomata	lungs

- A) 1
 B) 2
 C) 3
 ✓ D) 4

Question Type: Multiple Choice
Randomize Answers: No
Date Added: Thu 26th Aug 2021
Last Modified: N/A
QID#: 28,828,086

[Answers](#) | [Edit](#) | [Duplicate](#) | [Used In](#) | [Reorder](#)

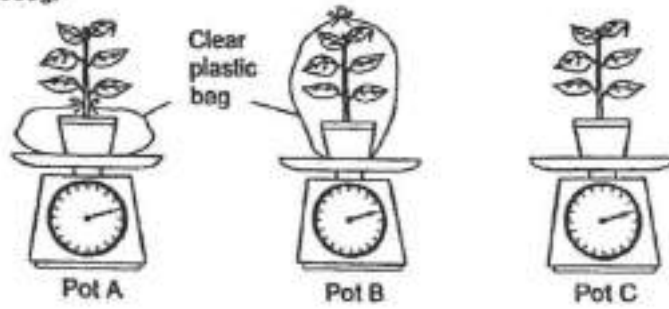
[Remove From Test](#)

Question 8

Primary 5 Science » Primary 5 Science (Term 4)

2 pts

William conducted an experiment using three similar potted plants, A, B and C. He watered the three potted plants with the same amount of water and placed them in a garden. The mass of each potted plant at the start of the experiment was 2000g.



Which of the following is correct about the mass of each potted plant after one day?

	Lightest	→	Heaviest
1)	A		C
2)	B		C
3)	C		B
4)	C		A

- A) 1
 B) 2
 ✓ C) 3
 D) 4

Question Type: Multiple Choice
Randomize Answers: No
Date Added: Thu 26th Aug 2021
Last Modified: N/A
QID#: 28,828,088

[Answers](#) | [Edit](#) | [Duplicate](#) | [Used In](#) | [Reorder](#)

[Remove From Test](#)

Question 9

Primary 5 Science » Primary 5 Science (Term 4)

2 pts

Ben removed only the food-carrying tubes of the stem at X.



Why did the roots die after some time?

- A) the roots could not take in mineral salts
- B) the roots were unable to keep the plant upright
- ✓ C) the stem could not transport food to the roots
- D) the stem could not transport water to the leaves

Question Type: Multiple Choice
Randomize Answers: No
Date Added: Thu 26th Aug 2021
Last Modified: N/A
QID#: 28,828,093

[Answers](#) | [Edit](#) | [Duplicate](#) | [Used In](#) | [Reorder](#)

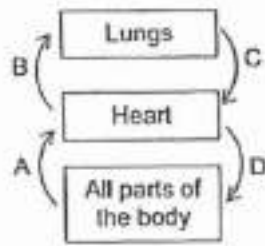
[Remove From Test](#)

Question 10

Primary 5 Science » Primary 5 Science (Term 4)

2 pts

The diagram below shows the direction of blood flow in a human body.



Oxygenated blood is blood rich in oxygen and deoxygenated blood is blood poor in oxygen. Which of the following describes the type of blood correctly?

	A	B	C	D
1)	oxygenated	oxygenated	deoxygenated	deoxygenated
2)	deoxygenated	deoxygenated	oxygenated	oxygenated
3)	oxygenated	deoxygenated	oxygenated	deoxygenated
4)	deoxygenated	oxygenated	deoxygenated	oxygenated

- A) 1
 ✓ B) 2
 C) 3
 D) 4

Question Type: Multiple Choice
Randomize Answers: No
Date Added: Thu 26th Aug 2021
Last Modified: N/A
QID#: 28,828,095

[Answers](#) | [Edit](#) | [Duplicate](#) | [Used In](#) | [Reorder](#)

[Remove From Test](#)

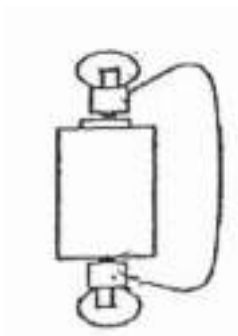
Question 11

Primary 5 Science » Primary 5 Science (Term 4)

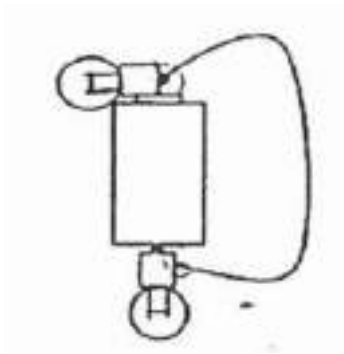
2 pts

Which one of the following electric circuits allows only 1 bulb to light up?

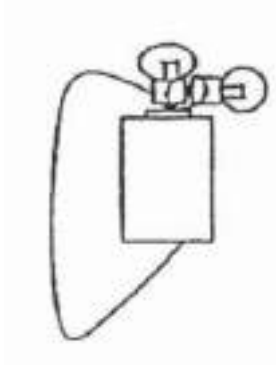
A)



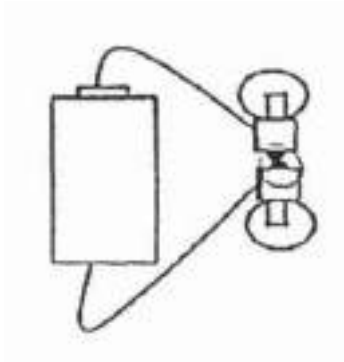
B)



✓ C)



D)



Question Type: Multiple Choice
Randomize Answers: No
Date Added: Thu 26th Aug 2021
Last Modified: N/A
QID#: 28,828,101

[↗ Answers](#) | [✎ Edit](#) | [📄 Duplicate](#) | [📌 Used In](#) | [⬇ Reorder](#)

[Remove From Test](#)

Question 12

Primary 5 Science » Primary 5 Science (Term 4)

2 pts

Which of the following materials are conductors of electricity?

A: Aluminium. D: Rubber
 B: Cotton. E: Silver
 C: Glass

A) A and C only

✓ B) A and E only

C) B,D and E only

D) B,D and C only

Question Type: Multiple Choice
Randomize Answers: No
Date Added: Thu 26th Aug 2021
Last Modified: N/A
QID#: 28,828,111

[Answers](#) | [Edit](#) | [Duplicate](#) | [Used In](#) | [Reorder](#)

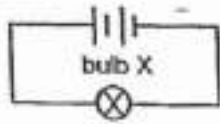
[Remove From Test](#)

Question 13

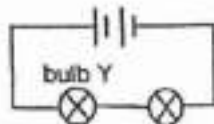
Primary 5 Science » Primary 5 Science (Term 4)

2 pts

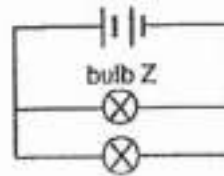
Study the three circuits, A, B and C, below.



circuit A



circuit B



circuit C

All the bulbs and batteries in the three circuits are the same. Which of the following statements about the brightness of the bulbs is/ are correct?

- A: Bulb X is as bright as bulb Y.
- B: Bulb X is as bright as bulb Z.
- C: Bulb Z is brighter than bulb Y.
- D: Bulb Z is brighter than bulb X.

- A) A and B only
- B) A and C only
- ✓ C) B and C only
- D) D and C only

Question Type: Multiple Choice
Randomize Answers: No
Date Added: Thu 26th Aug 2021
Last Modified: N/A
QID#: 28,828,117

[Answers](#) | [Edit](#) | [Duplicate](#) | [Used In](#) | [Reorder](#)

[Remove From Test](#)

Question 14

Primary 5 Science » Primary 5 Science (Term 4)

2 pts

In the diagram below, when object P was slowly brought close to object Q, the aluminium ball was pushed off the wooden table by object Q.



What are objects P and Q likely to be?

	Object P	Object Q
1)	magnet	steel rod
2)	steel rod	magnet
3)	aluminium rod	steel rod
4)	magnet	magnet

- A) 1
 B) 2
 C) 3
 ✓ D) 4

Question Type: Multiple Choice
Randomize Answers: No
Date Added: Thu 26th Aug 2021
Last Modified: N/A
QID#: 28,828,124

[Answers](#) | [Edit](#) | [Duplicate](#) | [Used In](#) | [Reorder](#)

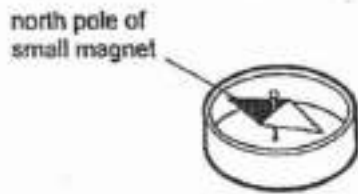
[Remove From Test](#)

Question 15

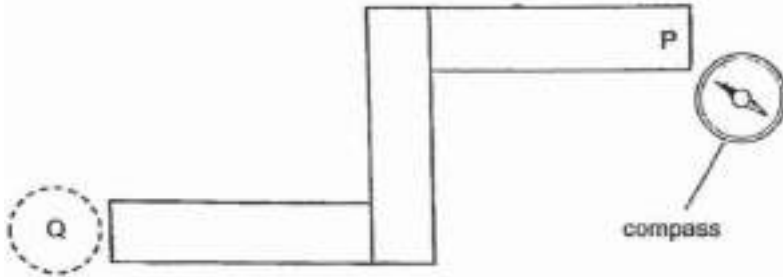
Primary 5 Science » Primary 5 Science (Term 4)

2 pts

A compass has a small magnet that can rotate freely as shown.

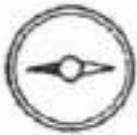


Three bar magnets were arranged in the figure shown below, where the ends were attracted to one another. A compass was placed at end P and the direction of the compass-needle is shown in the figure below.



What would the direction of the needle be when the compass is placed at Q?

✓ A)



B)



C)



D)



Question Type: Multiple Choice
Randomize Answers: No
Date Added: Thu 26th Aug 2021
Last Modified: N/A
QID#: 28,828,133

[Answers](#) | [Edit](#) | [Duplicate](#) | [Used In](#) | [Reorder](#)

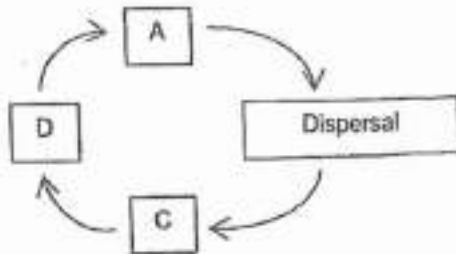
[Remove From Test](#)

Question 16

Primary 5 Science » Primary 5 Science (Term 4)

2 pts

The diagram below shows the processes in the development of a plant.



The process of seed dispersal is shown above. When would the fruits develop?

- ✓ A) At stage A
- B) At stage C
- C) At stage D
- D) Between stages C and D

Question Type: Multiple Choice
Randomize Answers: No
Date Added: Thu 26th Aug 2021
Last Modified: N/A
QID#: 28,828,136

[Answers](#) | [Edit](#) | [Duplicate](#) | [Used In](#) | [Reorder](#)

[Remove From Test](#)

Question 17

Primary 5 Science » Primary 5 Science (Term 4)

2 pts

Jerry germinated a seed each from plants A, B and C. He recorded his observation of their growth in the table below.

Observation	Number of days after each seed was planted		
	A	B	C
Root appears	2	2	2
Shoot appears	3	3	3
First flower appears	30	20	40
First fruit appears	40	40	80

Based on the information above, which of the following statements is true?

- A) Plant A was pollinated first
- B) Plant B was alive for the shortest period of time
- C) Plant C grew the greatest number of flowers
- ✓ D) All 3 seeds took the same amount of time to germinate

Question Type: Multiple Choice
 Randomize Answers: No
 Date Added: Thu 26th Aug 2021
 Last Modified: N/A
 QID#: 28,828,143

[Answers](#) |
 [Edit](#) |
 [Duplicate](#) |
 [Used In](#) |
 [Reorder](#)

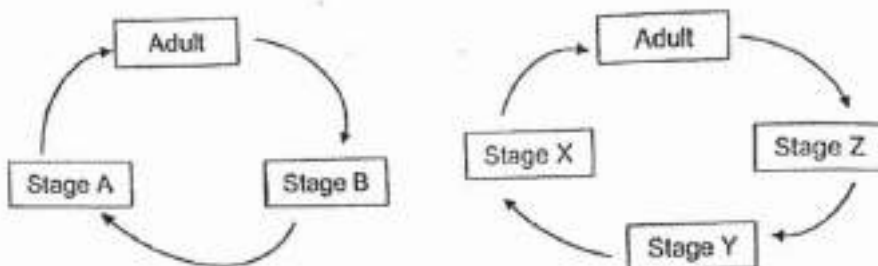
[Remove From Test](#)

Question 18

Primary 5 Science » Primary 5 Science (Term 4)

2 pts

The diagrams below show the stages in the life cycles of two insects.



Based on the diagram above, which of the following could stages A and X be?

	Stage A	Stage X
1)	Egg	Larva
2)	Larva	Nymph
3)	Nymph	Egg
4)	Nymph	Pupa

A) 1

- B) 2
- C) 3
- ✓ D) 4

Question Type: Multiple Choice
Randomize Answers: No
Date Added: Thu 26th Aug 2021
Last Modified: N/A
QID#: 28,828,144

[Answers](#) |
 [Edit](#) |
 [Duplicate](#) |
 [Used In](#) |
 [Reorder](#)

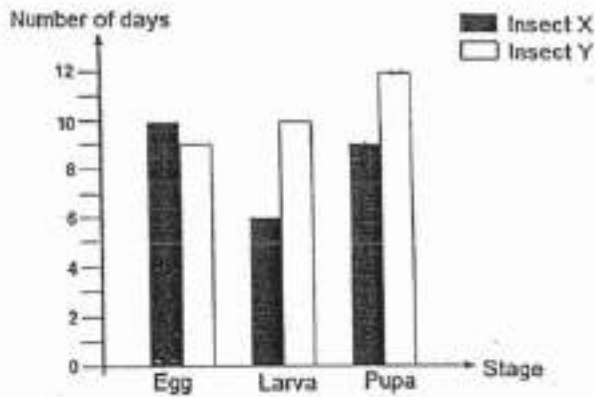
[Remove From Test](#)

Question 19

Primary 5 Science » Primary 5 Science (Term 4)

2 pts

The graph below shows the number of days each stage in the life cycle of Insect X and Insect Y last.



Based on the graph above, at which stage will Insect X and Insect Y be on the 17th day after the eggs are laid?

	Insect X	Insect Y
1)	Larva	Pupa
2)	Larva	Larva
3)	Pupa	Pupa
4)	Pupa	Larva

- A) 1
- B) 2
- C) 3
- ✓ D) 4

Question Type: Multiple Choice
Randomize Answers: No
Date Added: Thu 26th Aug 2021
Last Modified: N/A
QID#: 28,828,147

[Answers](#) |
 [Edit](#) |
 [Duplicate](#) |
 [Used In](#) |
 [Reorder](#)

[Remove From Test](#)

Question 20

Primary 5 Science » Primary 5 Science (Term 4)

2 pts

The diagram below shows a complete flower.



Flowers W, X and Y are from the same plant. However, some of their parts have been removed before pollination could occur as shown below.



Which flowers are able to develop into fruits?

11

- ✓ A) W and X only
- B) Y and X only
- C) W and Y only
- D) W, X and Y

Question Type: Multiple Choice
Randomize Answers: No
Date Added: Thu 26th Aug 2021
Last Modified: N/A
QID#: 28,828,155

[Answers](#) | [Edit](#) | [Duplicate](#) | [Used In](#) | [Reorder](#)

[Remove From Test](#)

Question 21

Primary 5 Science » Primary 5 Science (Term 4)

2 pts

The diagram below shows a rice cooker that Mrs Bani used to cook rice. When she opened it after the rice was cooked, she saw white mist coming out of the rice cooker.



Which of the following about white mist is correct?

	White mist is	There is white mist because
1)	steam	water evaporated from the cooked rice and escaped from the rice cooker.
2)	water vapour	water evaporated from the cooked rice and escaped from the rice cooker.
3)	water droplets	water vapour from the cooked rice condensed in the air outside the rice cooker.
4)	water droplets	water vapour from the cooked rice condensed in the air inside the rice cooker.

- A) 1
 B) 2
 ✓ C) 3
 D) 4

Question Type: Multiple Choice
 Randomize Answers: No
 Date Added: Thu 26th Aug 2021
 Last Modified: N/A
 QID#: 28,828,159

[Answers](#) | [Edit](#) | [Duplicate](#) | [Used In](#) | [Reorder](#)

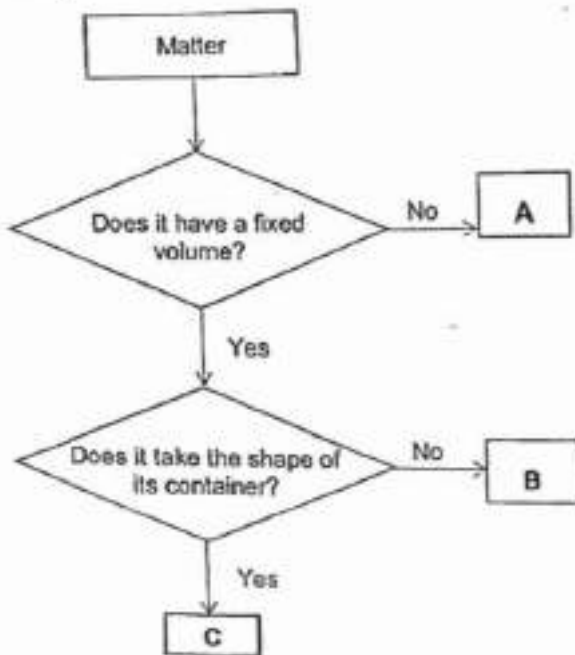
[Remove From Test](#)

Question 22

Primary 5 Science » Primary 5 Science (Term 4)

2 pts

Study the flow chart below.



Which one of the following items in the box below best represents A, B and C?

	A	B	C
1)	Oxygen	Rock	Sunblock lotion
2)	Oxygen	Sunblock lotion	Rock
3)	Rock	Sunblock lotion	Oxygen
4)	Sunblock lotion	Rock	Oxygen

- ✓ A) 1
 B) 2
 C) 3
 D) 4

Question Type: Multiple Choice
 Randomize Answers: No
 Date Added: Thu 26th Aug 2021
 Last Modified: N/A
 QID#: 28,828,162

[Answers](#) | [Edit](#) | [Duplicate](#) | [Used In](#) | [Reorder](#)

[Remove From Test](#)

Question 23

Primary 5 Science » Primary 5 Science (Term 4)

2 pts

Gina conducted an experiment and recorded the results as shown in the table below.

Container	Exposed surface area of water (cm ²)	Fan speed	Temperature of water (°C)	Time taken for water to evaporate completely (minutes)
A	70	2	45	72
B	70	2	69	53
C	70	2	92	27

The aim of her experiment is to find out if the _____

- A) presence of wind affects rate of evaporation
- ✓ B) temperature of water affects the rate of evaporation
- C) time taken for evaporation affects temperature of water
- D) amount of exposed surface area affects the rate of evaporation

Question Type: Multiple Choice
 Randomize Answers: No
 Date Added: Thu 26th Aug 2021
 Last Modified: N/A
 QID#: 28,828,168

[Answers](#) | [Edit](#) | [Duplicate](#) | [Used In](#) | [Reorder](#)

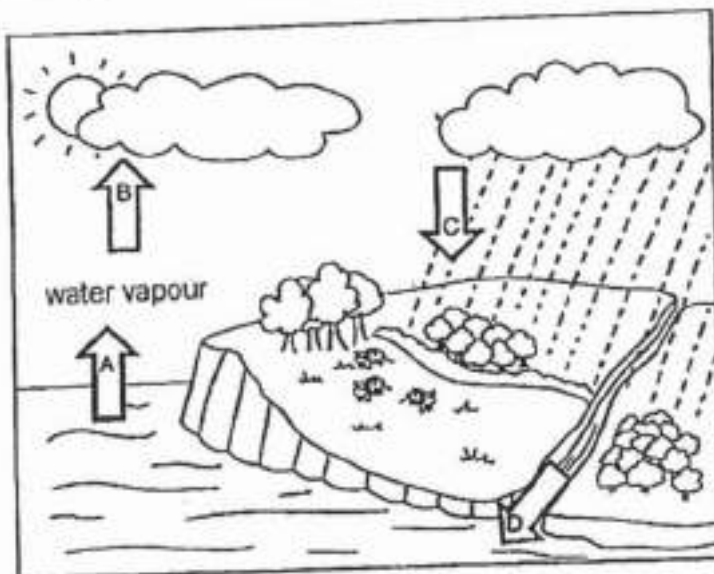
[Remove From Test](#)

Question 24

Primary 5 Science » Primary 5 Science (Term 4)

2 pts

The water cycle is shown below.



Which arrows represent processes when there is a change in the states of matter?

- ✓ A) A and B only
- B) A and D only

- C) B and C only
D) C and D only

Question Type: Multiple Choice
Randomize Answers: No
Date Added: Thu 26th Aug 2021
Last Modified: N/A
QID#: 28,828,177

[Answers](#) | [Edit](#) | [Duplicate](#) | [Used In](#) | [Reorder](#)

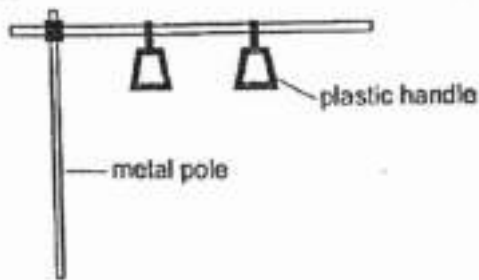
[Remove From Test](#)

Question 25

Primary 5 Science » Primary 5 Science (Term 4)

2 pts

The diagram below shows part of a metal pole and plastic handles inside a public bus.



Aini was standing inside an air-conditioned bus. She held onto the plastic handle with one hand while holding on to the metal pole with her other hand.

Her hands felt that the metal pole was colder than the plastic handle.

Which of the following explains why her hands felt that the metal pole was colder than the plastic handle?

- A) The metal pole had a lower temperature than the plastic handle
B) The metal pole had a greater surface area than the plastic handle
C) The plastic handle gained heat from the air faster than the metal pole
✓ D) The metal pole gained heat from her hand faster than the plastic handle

Question Type: Multiple Choice
Randomize Answers: No
Date Added: Thu 26th Aug 2021
Last Modified: N/A
QID#: 28,828,194

[Answers](#) | [Edit](#) | [Duplicate](#) | [Used In](#) | [Reorder](#)

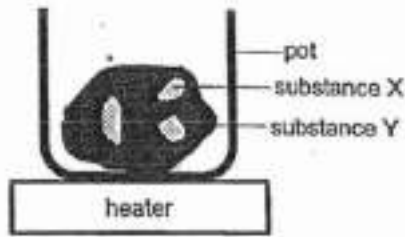
[Remove From Test](#)

Question 26

Primary 5 Science » Primary 5 Science (Term 4)

2 pts

Raju placed a solid made of two substances, X and Y in a pot as shown below.



The melting points of substances X and Y are as follows.

Substance	X	Y
Melting point (°C)	490	330

He wants to collect the solids of substance X only.

At what temperature should he set the heater such that he can obtain the solids of substance X?

- A) 310
- ✓ B) 340
- C) 490
- D) 500

Question Type: Multiple Choice
 Randomize Answers: No
 Date Added: Thu 26th Aug 2021
 Last Modified: N/A
 QID#: 28,828,205

[Answers](#) |
 [Edit](#) |
 [Duplicate](#) |
 [Used In](#) |
 [Reorder](#)

[Remove From Test](#)

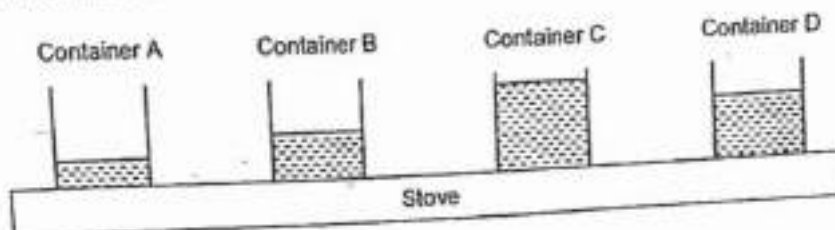
Question 27

Primary 5 Science » Primary 5 Science (Term 4)

2 pts

Four containers A, B, C and D of the same size and thickness were made of different materials. They were filled with equal amounts of water and were heated for 60 minutes.

The diagram below shows the amount of water left in each container at the end of 60 minutes.



Arrange the Containers, A, B, C and D, starting from the poorest conductor of heat to the best conductor of heat.

- A) A, B, D, C
- ✓ B) C, D, B, A
- C) B,D,C,A

D) D,C,B,A

Question Type: Multiple Choice
Randomize Answers: No
Date Added: Thu 26th Aug 2021
Last Modified: N/A
QID#: 28,828,218

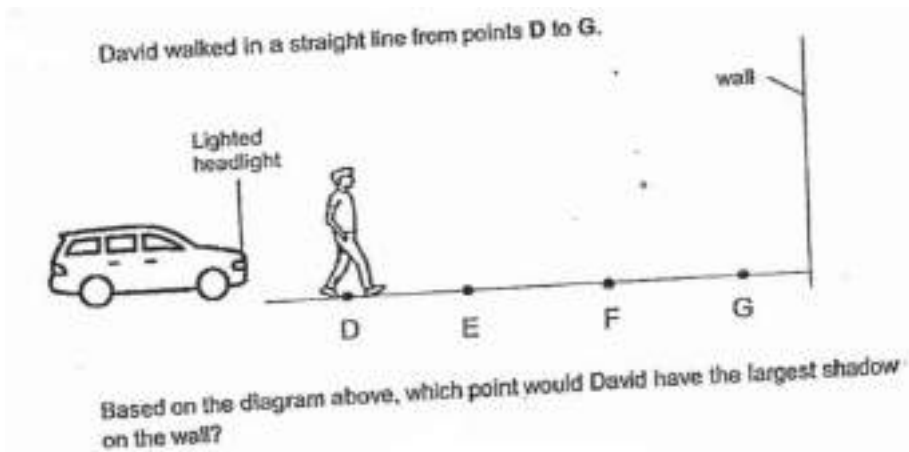
[Answers](#) | [Edit](#) | [Duplicate](#) | [Used In](#) | [Reorder](#)

[Remove From Test](#)

Question 28

Primary 5 Science » Primary 5 Science (Term 4)

2 pts



- ✓ A) D
- B) E
- C) F
- D) G

Question Type: Multiple Choice
Randomize Answers: No
Date Added: Thu 26th Aug 2021
Last Modified: N/A
QID#: 28,828,224

[Answers](#) | [Edit](#) | [Duplicate](#) | [Used In](#) | [Reorder](#)

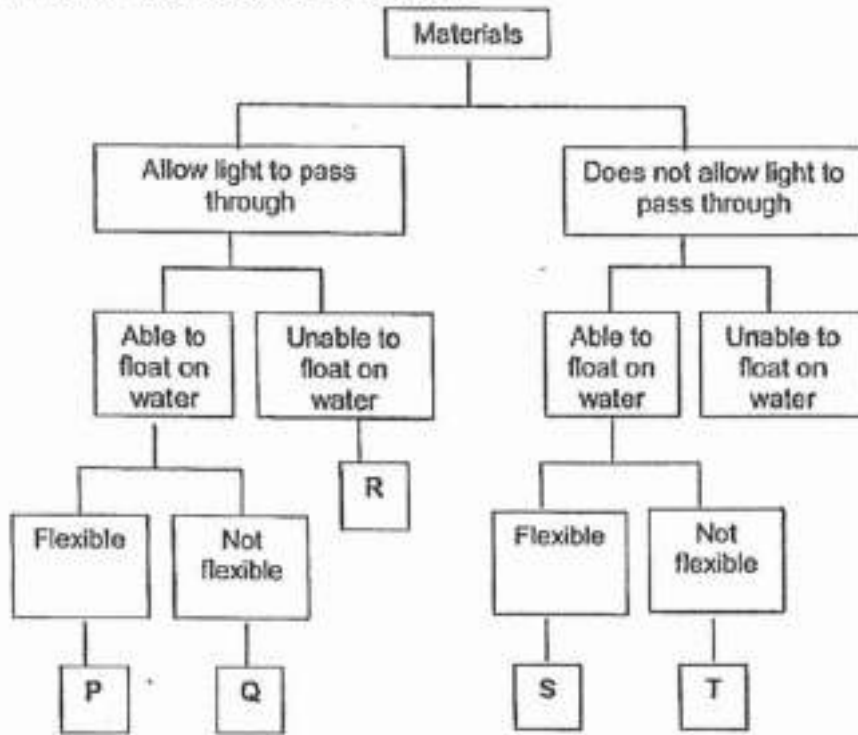
[Remove From Test](#)

Question 29

Primary 5 Science » Primary 5 Science (Term 4)

0 pts

Study the classification diagram below.



What is the similarity between Material P and Material T?

Question Type: Essay
Date Added: Thu 26th Aug 2021
Last Modified: N/A
QID#: 28,828,243

Correctly answered feedback

Both P and T are able to float on water

Incorrectly answered feedback

Both P and T are able to float on water

[Answers](#) | [Edit](#) | [Duplicate](#) | [Used In](#) | [Reorder](#)

[Remove From Test](#)

Question 30

Primary 5 Science » Primary 5 Science (Term 4)

0 pts

b) State two differences between Material Q and S

Question Type: Essay
Date Added: Thu 26th Aug 2021
Last Modified: N/A
QID#: 28,828,253

Correctly answered feedback

Q allows light to pass through but S does not.
 S is flexible but Q is not.

Incorrectly answered feedback

Q allows light to pass through but S does not.
S is flexible but Q is not.

[Answers](#) | [Edit](#) | [Duplicate](#) | [Used In](#) | [Reorder](#)

[Remove From Test](#)

Question 31

Primary 5 Science » Primary 5 Science (Term 4)

0 pts

Based on the classification diagram, write down the letter (P, Q, R, S, T) for each of the materials given below. [1m]

Material	Represented by letter
Clear Glass	
Wood	

Question Type: Essay
Date Added: Thu 26th Aug 2021
Last Modified: N/A
QID#: 28,828,262

Correctly answered feedback

- R
- T

Incorrectly answered feedback

- R
- T

[Answers](#) | [Edit](#) | [Duplicate](#) | [Used In](#) | [Reorder](#)

[Remove From Test](#)

Question 32

Primary 5 Science » Primary 5 Science (Term 4)

1 pt

The table below provides information about three cells P, Q and R.

A tick (✓) indicates the cell has this cell part.

Parts of a cell	Cell P	Cell Q	Cell R
Cell membrane	✓	✓	✓
Cell wall	✓	✓	
Chloroplast		✓	
Nucleus	✓	✓	✓

Based on the table, which cell parts are found in all three cells? [1m]

- ✓ A) Nucleus
B) Cell wall
C) Chloroplast

✓ D) Cell membrane

Question Type: Multiple Response
Randomize Answers: No
Grade style: Full points if all answers are correct
Date Added: Thu 26th Aug 2021
Last Modified: N/A
QID#: 28,828,271

[↗ Answers](#) |
 [✎ Edit](#) |
 [📄 Duplicate](#) |
 [📌 Used In](#) |
 [↕ Reorder](#)

[Remove From Test](#)

Question 33

Primary 5 Science » Primary 5 Science (Term 4)

0 pts

Complete the table by identifying where cells P, Q and R are taken from. [2m]

	Cell taken from:	Cell
i)	seed	
ii)	flower	
iii)	leaf	
iv)	human skin	

Question Type: Essay
Date Added: Thu 26th Aug 2021
Last Modified: N/A
QID#: 28,828,280

Correctly answered feedback

P
P
Q
R

Incorrectly answered feedback

P
P
Q
R

[↗ Answers](#) |
 [✎ Edit](#) |
 [📄 Duplicate](#) |
 [📌 Used In](#) |
 [↕ Reorder](#)

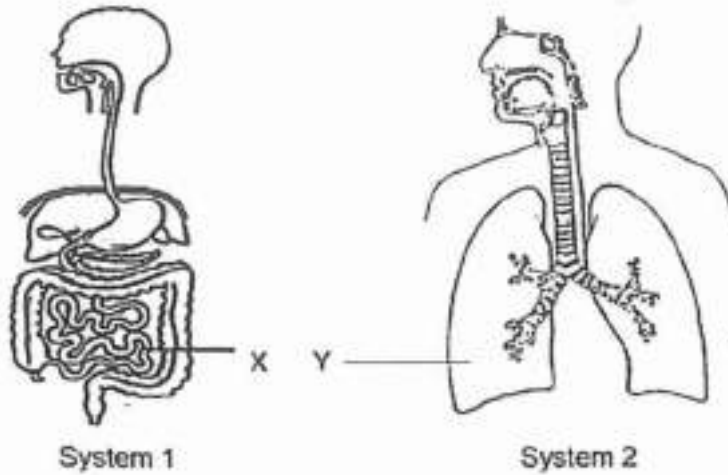
[Remove From Test](#)

Question 34

Primary 5 Science » Primary 5 Science (Term 4)

0 pts

The diagrams below shows the parts of 2 systems in the human body.



Identify the systems.

System 1: _____

System 2: _____

Question Type: Essay
Date Added: Thu 26th Aug 2021
Last Modified: N/A
QID#: 28,828,283

Correctly answered feedback

1: Digestive system
 2: Respiratory system

Incorrectly answered feedback

1: Digestive system
 2: Respiratory system

[Answers](#) | [Edit](#) | [Duplicate](#) | [Used In](#) | [Reorder](#)

[Remove From Test](#)

Question 35

Primary 5 Science » Primary 5 Science (Term 4)

1 pt

How do the substances in the blood differ in X and Y?

Blood leaving X carries ____ digested food than the blood entering it

- ✓ A) more
 B) less

Question Type: True False
Date Added: Thu 26th Aug 2021
Last Modified: N/A
QID#: 28,828,298

Question 36

Primary 5 Science » Primary 5 Science (Term 4)

1 pt

Blood leaving Y carries ___ carbon dioxide than the blood entering it

- A) more
 ✓ B) less

Question Type: True False
Date Added: Thu 26th Aug 2021
Last Modified: N/A
QID#: 28,828,304

Question 37

Primary 5 Science » Primary 5 Science (Term 4)

0 pts

Name the system that transports the substances name in (b) to all parts of the body

Question Type: Essay
Date Added: Thu 26th Aug 2021
Last Modified: N/A
QID#: 28,828,311

Correctly answered feedback

The circulatory system

Incorrectly answered feedback

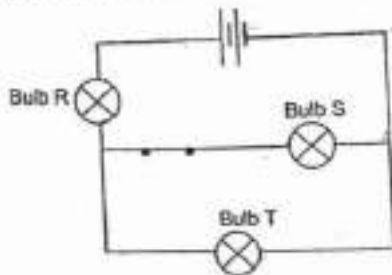
The circulatory system

Question 38

Primary 5 Science » Primary 5 Science (Term 4)

0 pts

Shaun set up an electric circuit, with bulbs R, S and T as shown in the circuit diagram below. He then closes the switch.



What will happen to Bulb R if Bulb S is fused?

[1m]

Question Type: Essay
Date Added: Thu 26th Aug 2021

Last Modified: N/A
QID#: 28,828,318

Correctly answered feedback

Bulb R remains lit/ can still light up

Incorrectly answered feedback

Bulb R remains lit/ can still light up

[Answers](#) | [Edit](#) | [Duplicate](#) | [Used In](#) | [Reorder](#)

[Remove From Test](#)

Question 39

Primary 5 Science » Primary 5 Science (Term 4)

1 pt

b) One of the bulbs was fused and the remaining bulbs did not light up when the switch is closed.
Which bulb was fused?

- ✓ A) R
B) S
C) T

Question Type: Multiple Choice
Randomize Answers: No
Date Added: Thu 26th Aug 2021
Last Modified: N/A
QID#: 28,828,330

[Answers](#) | [Edit](#) | [Duplicate](#) | [Used In](#) | [Reorder](#)

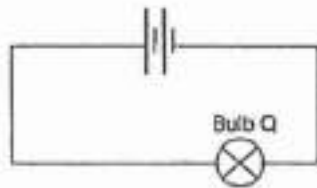
[Remove From Test](#)

Question 40

Primary 5 Science » Primary 5 Science (Term 4)

0 pts

Shaun was given the following circuit.



In the box provided below, draw a circuit diagram to show how Shaun can connect 2 batteries, 3 bulbs, and some wires such that all the bulbs will shine with the same brightness as bulb Q. [2m]



Please type "done" to proceed to the next question

Question Type: Essay

Date Added: Thu 26th Aug 2021
 Last Modified: N/A
 QID#: 28,828,346

Correctly answered feedback

3 bulbs and battery in parallel with no gaps

Incorrectly answered feedback

3 bulbs and battery in parallel with no gaps

[Answers](#) | [Edit](#) | [Duplicate](#) | [Used In](#) | [Reorder](#)

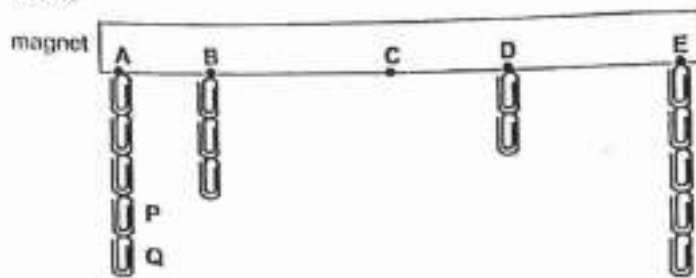
[Remove From Test](#)

Question 41

Primary 5 Science » Primary 5 Science (Term 4)

0 pts

Jasper wanted to find out the magnetic strength of a magnet at parts A, B, C, D and E. He observed the number of paper clips attracted at each part as shown below.



Based on Jasper's observation, what could he conclude about the magnetic strength of the poles of the magnet, A and E, and the centre, C? [1m]

Question Type: Essay
 Date Added: Thu 26th Aug 2021
 Last Modified: N/A
 QID#: 28,828,810

Correctly answered feedback

The magnetic strength at poles A and E are the strongest, whilst that at C centre is the weakest
 OR
 The poles of a magnet are stronger (in magnetic strength) than the center

Incorrectly answered feedback

The magnetic strength at poles A and E are the strongest, whilst that at C centre is the weakest
 OR
 The poles of a magnet are stronger (in magnetic strength) than the center

[Answers](#) | [Edit](#) | [Duplicate](#) | [Used In](#) | [Reorder](#)

[Remove From Test](#)

Question 42

Primary 5 Science » Primary 5 Science (Term 4)

0 pts

After Jasper removed Paper clips P and Q from the magnet, he observed that Paper clip Q was attracted to Paper Clip P as shown below. Explain why this happened. [1m]



Question Type: Essay
Date Added: Thu 26th Aug 2021
Last Modified: N/A
QID#: 28,828,815

Correctly answered feedback

P has become a magnet (via induction)

Incorrectly answered feedback

P has become a magnet (via induction)

[Answers](#) | [Edit](#) | [Duplicate](#) | [Used In](#) | [Reorder](#)

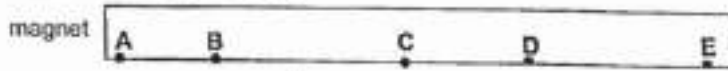
[Remove From Test](#)

Question 43

Primary 5 Science » Primary 5 Science (Term 4)

0 pts

Jasper dropped the magnet accidentally down a long flight of stairs. When he used the magnet to attract the paper clips again, he noticed a different number of paper clips attracted to the magnet. Draw the new number of paper clips for A, B, C, D and E in the diagram below. [2m]



Please type "done" to proceed to the next question

Question Type: Essay
Date Added: Thu 26th Aug 2021
Last Modified: N/A
QID#: 28,828,824

Correctly answered feedback

Parts A and E should have the most but fewer than before dropping down the stairs and C should have none

Incorrectly answered feedback

Parts A and E should have the most but fewer than before dropping down the stairs and C should have none

[Answers](#) | [Edit](#) | [Duplicate](#) | [Used In](#) | [Reorder](#)

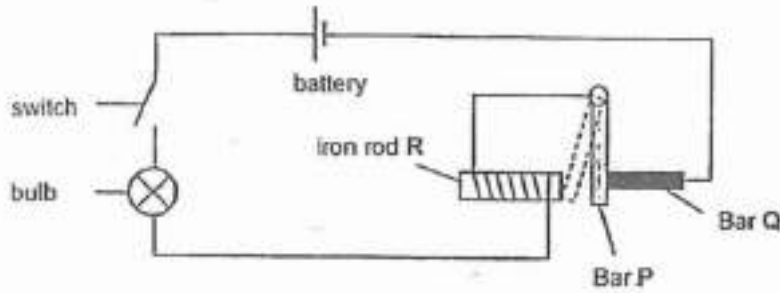
[Remove From Test](#)

Question 44

Primary 5 Science » Primary 5 Science (Term 4)

0 pts

Chloe set up the circuit shown below with steel bars P and Q. When she closed the switch, the bulb lit up and Bar P moved away from Bar Q and touched the iron rod R.



Give a reason why iron is suitable for making the rod R.

[1m]

Question Type: Essay
Date Added: Thu 26th Aug 2021
Last Modified: N/A
QID#: 28,828,831

Correctly answered feedback

Iron is a magnetic material

Incorrectly answered feedback

Iron is a magnetic material

[Answers](#) | [Edit](#) | [Duplicate](#) | [Used In](#) | [Reorder](#)

[Remove From Test](#)

Question 45

Primary 5 Science » Primary 5 Science (Term 4)

0 pts

b) Explain why bar P touched the iron rod after Chloe closed the switch

Question Type: Essay
Date Added: Thu 26th Aug 2021
Last Modified: N/A
QID#: 28,828,836

Correctly answered feedback

When the switch is closed, there will be a closed circuit and iron rod will become an electromagnet which will then attract bar P

Incorrectly answered feedback

When the switch is closed, there will be a closed circuit and iron rod will become an electromagnet which will then attract bar P

[Answers](#) | [Edit](#) | [Duplicate](#) | [Used In](#) | [Reorder](#)

[Remove From Test](#)

Question 46

Primary 5 Science » Primary 5 Science (Term 4)

0 pts

c) When bar P touched the iron rod, the bulb turned off. Explain why

Question Type: Essay

Date Added: Thu 26th Aug 2021
Last Modified: N/A
QID#: 28,828,838

Correctly answered feedback

There is an open circuit

Incorrectly answered feedback

There is an open circuit

[Answers](#) | [Edit](#) | [Duplicate](#) | [Used In](#) | [Reorder](#)

[Remove From Test](#)

Question 47

Primary 5 Science » Primary 5 Science (Term 4)

0 pts

d) Can bar Q be made of wood? Explain your answer

Question Type: Essay
Date Added: Thu 26th Aug 2021
Last Modified: N/A
QID#: 28,828,844

Correctly answered feedback

No. Wood is a non-conductor of electricity, so it will not form a closed circuit.

Incorrectly answered feedback

No. Wood is a non-conductor of electricity, so it will not form a closed circuit.

[Answers](#) | [Edit](#) | [Duplicate](#) | [Used In](#) | [Reorder](#)

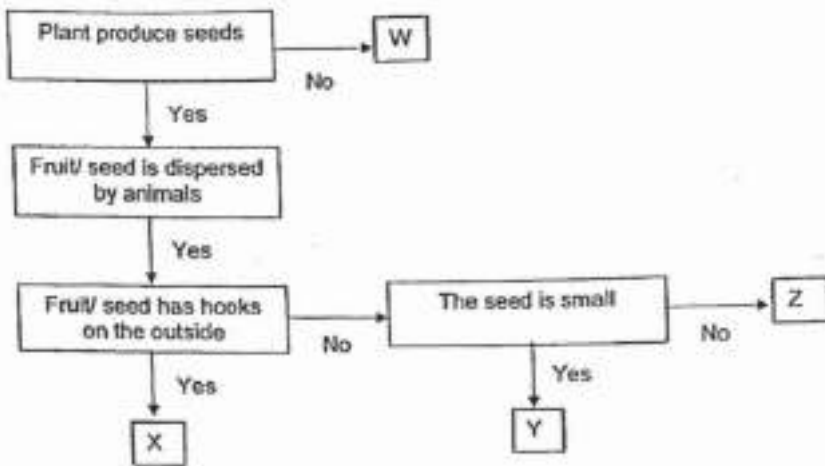
[Remove From Test](#)

Question 48

Primary 5 Science » Primary 5 Science (Term 4)

0 pts

Study the flowchart shown below.



Based on the chart above and the diagram of the plants below, write the letters 'W, X, Y or Z' in the boxes below. [2m]



	Plants
African lovegrass	
Bird's nest fern	
Grape vine	

Question Type: Essay
 Date Added: Thu 26th Aug 2021
 Last Modified: N/A
 QID#: 28,828,851

Correctly answered feedback

X
W
Y

Incorrectly answered feedback

X
W
Y

Answers | Edit | Duplicate | Used In | Reorder

Remove From Test

Question 49

Primary 5 Science » Primary 5 Science (Term 4)

0 pts

b) State one other characteristic of Y that enables it to be dispersed by animals.

Question Type: Essay
 Date Added: Thu 26th Aug 2021
 Last Modified: N/A
 QID#: 28,828,853

Correctly answered feedback

The fruit is sweet/ juicy/ fleshy/ edible

Incorrectly answered feedback

The fruit is sweet/ juicy/ fleshy/ edible

[Answers](#) | [Edit](#) | [Duplicate](#) | [Used In](#) | [Reorder](#)

[Remove From Test](#)

Question 50

Primary 5 Science » Primary 5 Science (Term 4)

0 pts

c) Describe how fruit/seed Z is dispersed by animals

Question Type: Essay
Date Added: Thu 26th Aug 2021
Last Modified: N/A
QID#: 28,828,858

Correctly answered feedback

The animal eat the flesh of the fruit and spit out

Incorrectly answered feedback

The animal eat the flesh of the fruit and spit out

[Answers](#) | [Edit](#) | [Duplicate](#) | [Used In](#) | [Reorder](#)

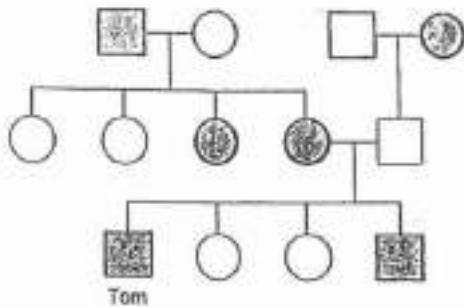
[Remove From Test](#)

Question 51





Primary 5 Science » Primary 5 Science (Term 4)

1 pt

Study the family tree of Tom's family members.



Key:

	Male with brown hair		Male with red hair
	Female with brown hair		Female with red hair

a) How many siblings does Tom's mother have? [1m]

Accepted answers:

- ✓ 3
- ✓ three

Question Type: Free Text
Date Added: Thu 26th Aug 2021
Last Modified: N/A
QID#: 28,828,862

Correctly answered feedback

3

[Answers](#) | [Edit](#) | [Duplicate](#) | [Used In](#) | [Reorder](#)

[Remove From Test](#)

Question 52

Primary 5 Science » Primary 5 Science (Term 4)

0 pts

b) Based on the diagram above, explain why Tom has brown hair.

Question Type: Essay
Date Added: Thu 26th Aug 2021
Last Modified: N/A
QID#: 28,828,867

Correctly answered feedback

His mother/ paternal grandmother/ maternal grandfather passed down the characteristic of brown hair to him

Incorrectly answered feedback

His mother/ paternal grandmother/ maternal grandfather passed down the characteristic of brown hair to him

[Answers](#) | [Edit](#) | [Duplicate](#) | [Used In](#) | [Reorder](#)

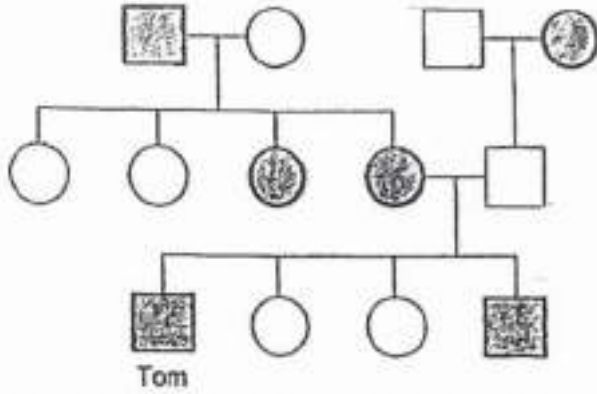
[Remove From Test](#)

Question 53





Primary 5 Science » Primary 5 Science (Term 4)

0 pts

Study the family tree of Tom's family members.



Key:

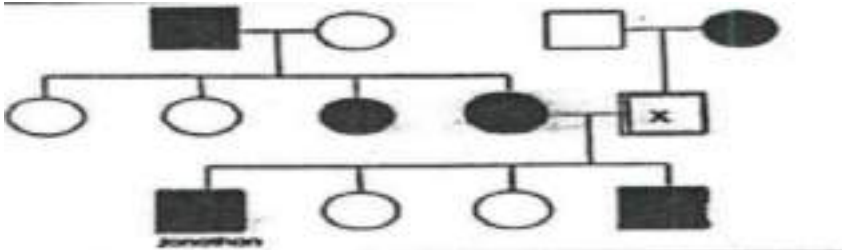
	Male with brown hair		Male with red hair
	Female with brown hair		Female with red hair

c) Put

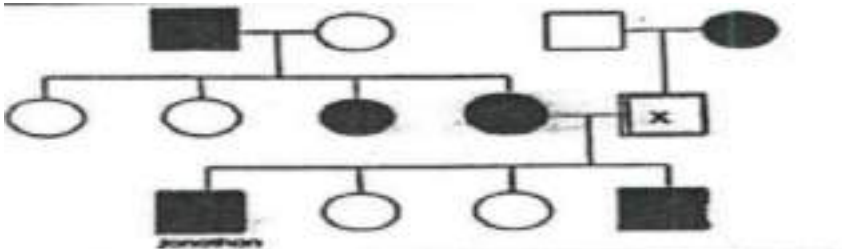
an "X" inside the symbol that represents Tom's father

Question Type: Essay
 Date Added: Thu 26th Aug 2021
 Last Modified: N/A
 QID#: 28,828,871

Correctly answered feedback



Incorrectly answered feedback



Answers | Edit | Duplicate | Used In | Reorder

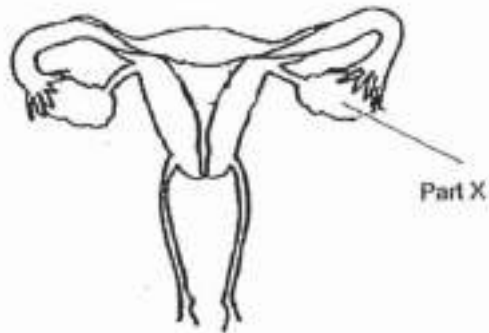
Remove From Test

Question 54

Primary 5 Science » Primary 5 Science (Term 4)

0 pts

The diagram below shows the cross section of a human female reproductive system.

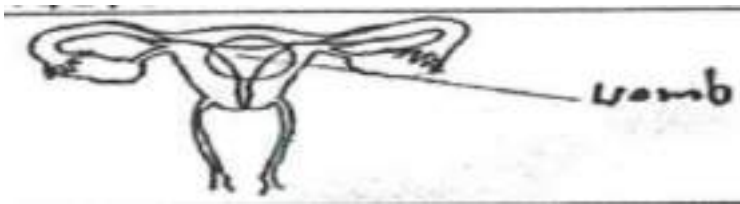


On the diagram above, circle and name the part where the fertilized egg develops into an unborn baby. [1m]

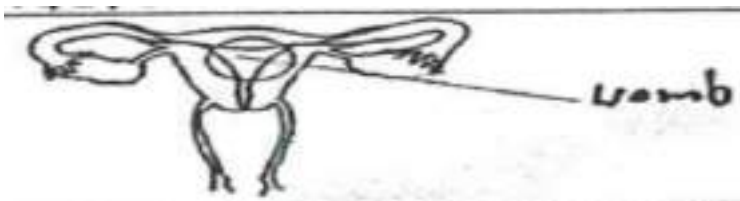
Please type "done" to proceed to the next question

Question Type: Essay
 Date Added: Thu 26th Aug 2021
 Last Modified: N/A
 QID#: 28,828,877

Correctly answered feedback



Incorrectly answered feedback



[Answers](#) | [Edit](#) | [Duplicate](#) | [Used In](#) | [Reorder](#)

[Remove From Test](#)

Question 55

Primary 5 Science » Primary 5 Science (Term 4)

1 pt

bi) Name part X

Accepted answers:

- ✓ ovary
- ✓ ovaries

Question Type: Free Text
 Date Added: Thu 26th Aug 2021
 Last Modified: N/A

QID#: 28,828,878

[Answers](#) | [Edit](#) | [Duplicate](#) | [Used In](#) | [Reorder](#)
[Remove From Test](#)**Question 56**

Primary 5 Science » Primary 5 Science (Term 4)

0 pts

bii) If a woman is born without any part X, is she able to reproduce naturally? Explain your answer

Question Type: Essay
Date Added: Thu 26th Aug 2021
Last Modified: N/A
QID#: 28,828,881

Correctly answered feedback

She cannot produce eggs for reproduction

Incorrectly answered feedback

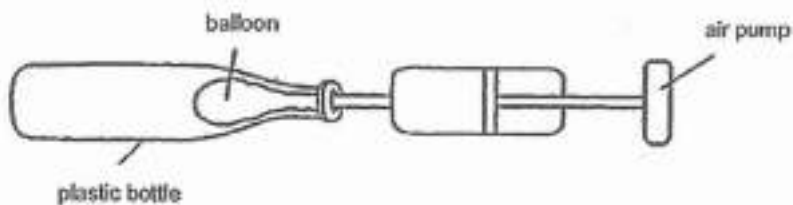
She cannot produce eggs for reproduction

[Answers](#) | [Edit](#) | [Duplicate](#) | [Used In](#) | [Reorder](#)
[Remove From Test](#)**Question 57**

Primary 5 Science » Primary 5 Science (Term 4)

0 pts

Alex placed a balloon into a plastic bottle as shown below.



- a) Alex tried inflating the balloon using the air pump but found it difficult to do so. Why is this so? [1m]

Question Type: Essay
Date Added: Thu 26th Aug 2021
Last Modified: N/A
QID#: 28,828,883

Correctly answered feedback

Air in the bottle occupies space (and is unable to escape) thus it is difficult to inflate the balloon

Incorrectly answered feedback

Air in the bottle occupies space (and is unable to escape) thus it is difficult to inflate the balloon

[Answers](#) | [Edit](#) | [Duplicate](#) | [Used In](#) | [Reorder](#)
[Remove From Test](#)**Question 58**

Primary 5 Science » Primary 5 Science (Term 4)

0 pts

b) Alex's friend suggested poking a hole in the plastic bottle so that the balloon can be inflated more easily. Explain why the balloon can be inflated more easily after a hole is made in the bottle

Question Type: Essay
Date Added: Thu 26th Aug 2021
Last Modified: N/A
QID#: 28,828,888

Correctly answered feedback

To allow the air in the bottle to escape, enabling the air in the balloon to take up the space previously taken up by the air in the bottle

Incorrectly answered feedback

To allow the air in the bottle to escape, enabling the air in the balloon to take up the space previously taken up by the air in the bottle

[Answers](#) | [Edit](#) | [Duplicate](#) | [Used In](#) | [Reorder](#)

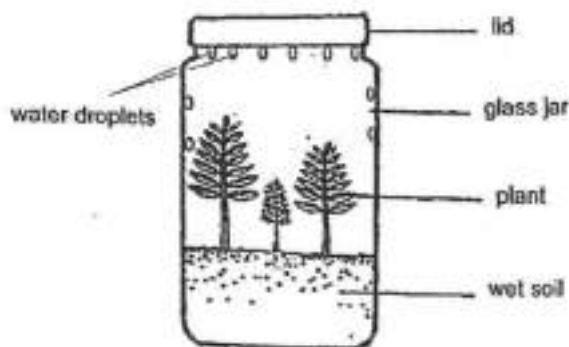
[Remove From Test](#)

Question 59

Primary 5 Science » Primary 5 Science (Term 4)

0 pts

The diagram below shows a terrarium where a few plants were enclosed in a container made of clear glass. It was sealed with a glass lid. After some time, some water droplets were observed on the inner sides of the container.



Explain how the water droplets were formed.

[2m]

Question Type: Essay
Date Added: Thu 26th Aug 2021
Last Modified: N/A
QID#: 28,828,894

Correctly answered feedback

The water in the wet soil evaporated into water vapour/ Plant released water vapour through the leaves

The warmer water vapour then came into contact with the cooler surface of the glass jar loses heat and condenses into water droplets

Incorrectly answered feedback

The water in the wet soil evaporated into water vapour/ Plant released water vapour through the leaves

The warmer water vapour then came into contact with the cooler surface of the glass jar loses heat and condenses into water droplets

[Answers](#) | [Edit](#) | [Duplicate](#) | [Used In](#) | [Reorder](#)

[Remove From Test](#)

Question 60

Primary 5 Science » Primary 5 Science (Term 4)

0 pts

b) How does the glass line help the terrarium to maintain a constant supply of water over the next few weeks

Question Type: Essay
Date Added: Thu 26th Aug 2021
Last Modified: N/A
QID#: 28,828,897

Correctly answered feedback

It prevents the water vapour from escaping, which condenses into water droplets and falls back into the soil (for the plants to absorb)

Incorrectly answered feedback

It prevents the water vapour from escaping, which condenses into water droplets and falls back into the soil (for the plants to absorb)

[Answers](#) | [Edit](#) | [Duplicate](#) | [Used In](#) | [Reorder](#)

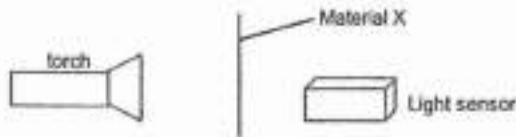
[Remove From Test](#)

Question 61

Primary 5 Science » Primary 5 Science (Term 4)

0 pts

John conducted an experiment in an enclosed dark room. He placed a sheet of Material X between the lighted torch and a light sensor. He measured the amount of light that passed through Material X and recorded the results in the table below.



John repeated the experiment by increasing the number of sheets of Material X used. The table below shows the results after the experiment.

Number of sheets of Material X used	0	1	2	3	4	5
Amount of light (units)	135	100	80	Z	40	20

a) Complete the table above by giving a suitable value for Z. [1m]

Z: _____ units

Question Type: Essay
Date Added: Thu 26th Aug 2021
Last Modified: N/A
QID#: 28,828,899

Correctly answered feedback

Range from 41 to 79

Incorrectly answered feedback

Range from 41 to 79

[Answers](#) | [Edit](#) | [Duplicate](#) | [Used In](#) | [Reorder](#)[Remove From Test](#)

Question 62

Primary 5 Science » Primary 5 Science (Term 4)

0 pts

b) What is the relationship between the number of sheets of Material X used and the amount of light passing through?

Question Type: Essay
Date Added: Thu 26th Aug 2021
Last Modified: N/A
QID#: 28,828,904

Correctly answered feedback

The higher the number of sheets of Material X used, the smaller amount of light can be passed through it

OR

The fewer the number of sheets used, the more amount of light can be passed through it

Incorrectly answered feedback

The higher the number of sheets of Material X used, the smaller amount of light can be passed through it

OR

The fewer the number of sheets used, the more amount of light can be passed through it

[Answers](#) | [Edit](#) | [Duplicate](#) | [Used In](#) | [Reorder](#)[Remove From Test](#)

Question 63

Primary 5 Science » Primary 5 Science (Term 4)

0 pts

c) State two variables that must be kept constant in order to conduct a fair test

Question Type: Essay
Date Added: Thu 26th Aug 2021
Last Modified: N/A
QID#: 28,828,908

Correctly answered feedback

- same light intensity
- same colour/ thickness of material X
- Distance between torch and material X/ material X and sensor/ torch and sensor

Incorrectly answered feedback

- same light intensity
- same colour/ thickness of material X
- Distance between torch and material X/ material X and sensor/ torch and sensor

[Answers](#) | [Edit](#) | [Duplicate](#) | [Used In](#) | [Reorder](#)[Remove From Test](#)

Question 64

Primary 5 Science » Primary 5 Science (Term 4)

0 pts

d) based on John's experiment, state a property of material X

Question Type: Essay
Date Added: Thu 26th Aug 2021
Last Modified: N/A
QID#: 28,828,909

Correctly answered feedback

It is translucent

Incorrectly answered feedback

It is translucent

[Answers](#) | [Edit](#) | [Duplicate](#) | [Used In](#) | [Reorder](#)

[Remove From Test](#)

www.classmarker.com